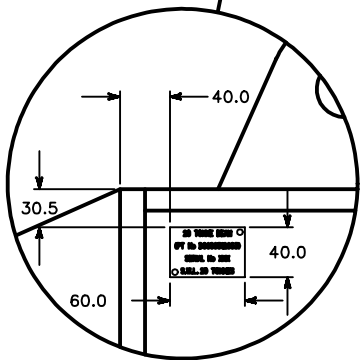
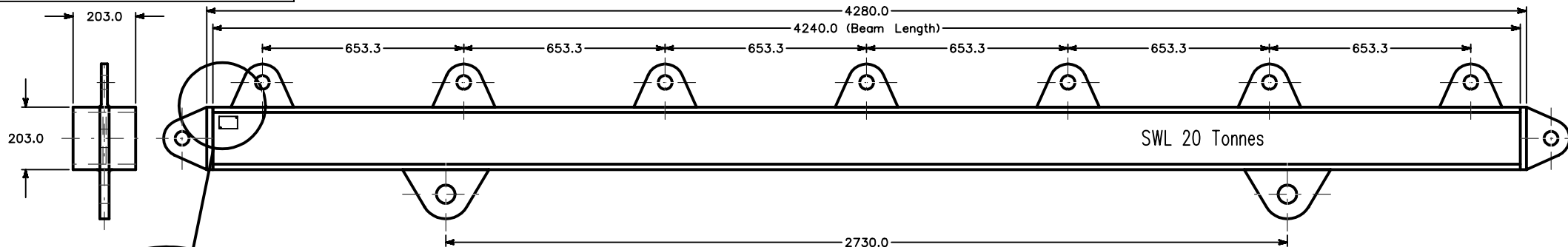
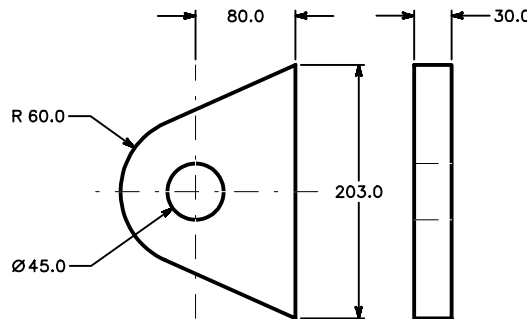


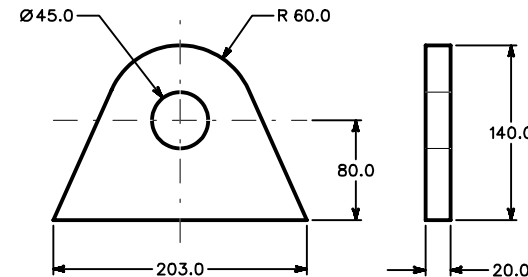
If In Doubt ASK !



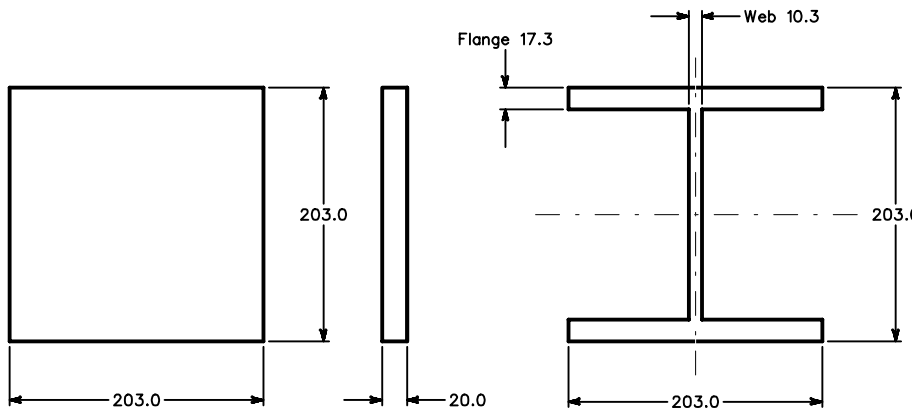
ID Plate Detail



End Lug Detail

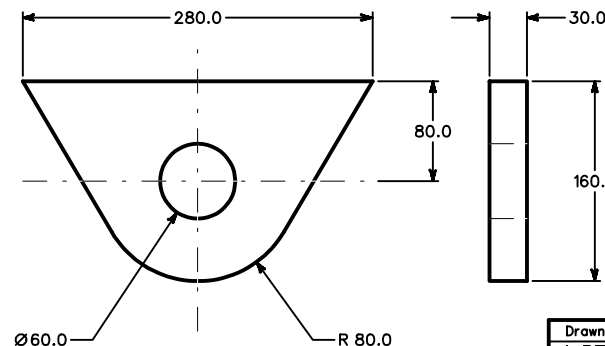


Top Lug Detail



End Plate Detail

Beam Detail



Bottom Lug Detail

Construction Notes	
Material :- 203x203MMx71KgM Universal Column To BS EN10025 Grade FE430A Lugs And End Plate : Grade FE50B	
Tolerance:- ± 1mm	
Surface Finish:- Galvanised	
All Edges To Be Deburred	
All Lugs And End Plates Welded All Round	
ID Plate Rivetted To Beam	
ID Plate Material:- Stainless Steel	
ID Text Dims: - Height 4mm, Width 3mm	
SWL Text Stenciled And Spray Painted	
SWL Text Dims: - Height 47mm, Width 32mm	

Tolerance	See Note
See Note	See Note

© SCHOLLE EUROPE LIMITED 1/a Crestbury and J.W. Automarine 1972-2003. This article and drawing is protected by copyright and is the property of Scholle Europe Limited. It may not be copied, published, or used for any purpose other than that for which it has been supplied, except with the written permission of Scholle Europe Limited.

File Name
CJW98185.DGN

Material
See Note

SCHOLLE EUROPE LTD.
1/a
automarine

Enterprise Way
Fakenham, Norfolk, NR21 8SN, England
Telephone: Fakenham 01328 852300
Fakenham 01328 854222
Email: sales@jwautomarine.co.uk

Drawn	Sig	Revisions	Issue	Date	Client
AJD		Drawn	1	16.9.98	JW Automarine
	SBG	Lug Detail	2	3.3.00	
	SBG	ID Plate	3	17.4.01	
	SBG	ID Plate Text	4	8.6.01	
On A1					Client
Checked					Drawing No CJW 98/185 Issue No 4
					Sheet No 1 Of 1 Date 8.6.01

Title
20 Tonne Beam (Pt No. D0606512603)