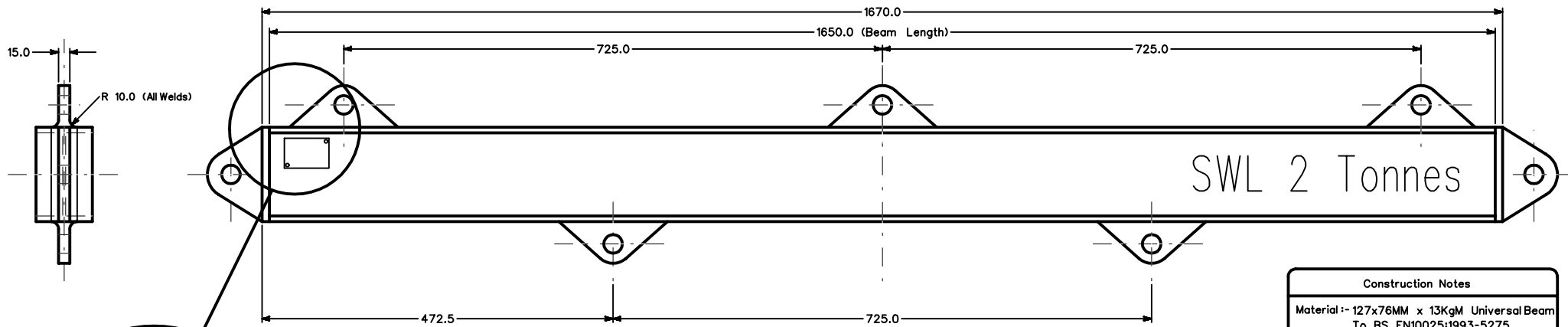
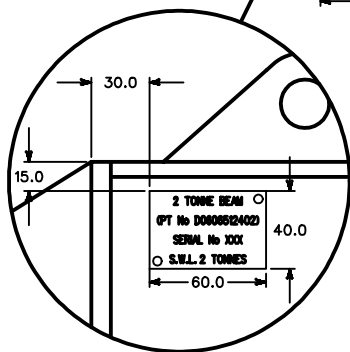


If In Doubt ASK !

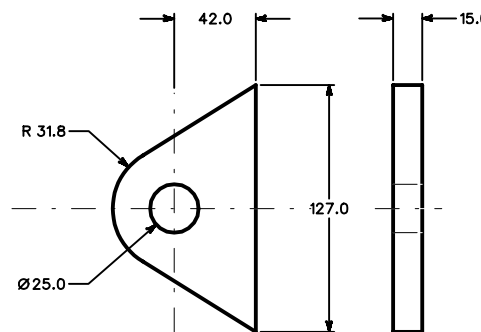


T2 Lifting Beam (2000 Kg)

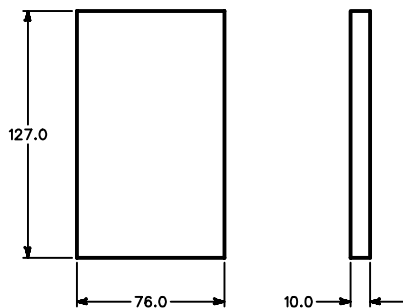
Construction Notes	
Material :- 127x76MM x 13KgM Universal Beam To BS EN10025:1993-5275 Grade FE430A Lugs And End Plate : Grade FE50B	
Tolerance:- ± 1mm	
Surface Finish:- Galvanised	
All Edges To Be Deburred	
All Lugs And End Plates Welded All Round	
ID Plate Rivetted To Beam	
ID Plate Material:- Stainless Steel	
ID Text Dims:- Height 4mm, Width 3mm	
SWL Text Stenciled And Spray Painted	
SWL Text Dims:- Height 47mm, Width 32mm	



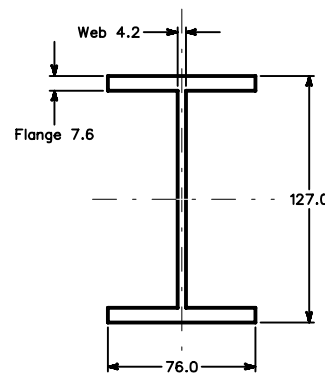
ID Plate Detail



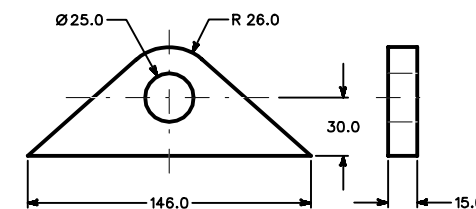
End Detail



End Plate Detail



Beam Detail



Lug Detail
(For Top And Bottom Lugs)

Dimensions In MM				File Name	
Tolerance				CJWB322.DGN	
See Table				Material	
See Table				See Table	
© SCHOLLE EUROPE LIMITED v/a Crestbury and J.W. Automarine 1972-2003. This article and drawing is protected by copyright and is the property of Scholle Europe Limited. It may not be copied, published, or used for any purpose other than that for which it has been supplied, except with the written permission of Scholle Europe Limited.				SCHOLLE EUROPE LTD. 178 automarine 	
Drawn <i>Paul</i> Sig A/J Redesigned 2 14.9.98 Scale SBC Material Note 3 5.4.00 1:3 SBC ID Plate 4 5.6.01 On A1 SBC ID Plate Text 5 8.6.01 Checked				Enter The Way Fakenham, Norfolk, NR21 8SN, England Telephone: Fakenham (01328) 852300 Fax: Fakenham (01328) 864222 Email: scs@jwautomarine.co.uk	
				Client	
				JW Automarine	
				Drawing No	CJW 83/22
				Issue No	5
				Sheet No	1 of 1
				Date	8.6.01
Title					
2 Tonne Lifting Beam D0606512402					