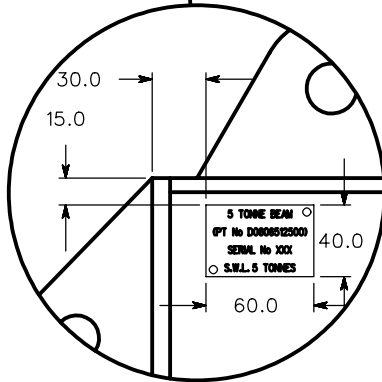
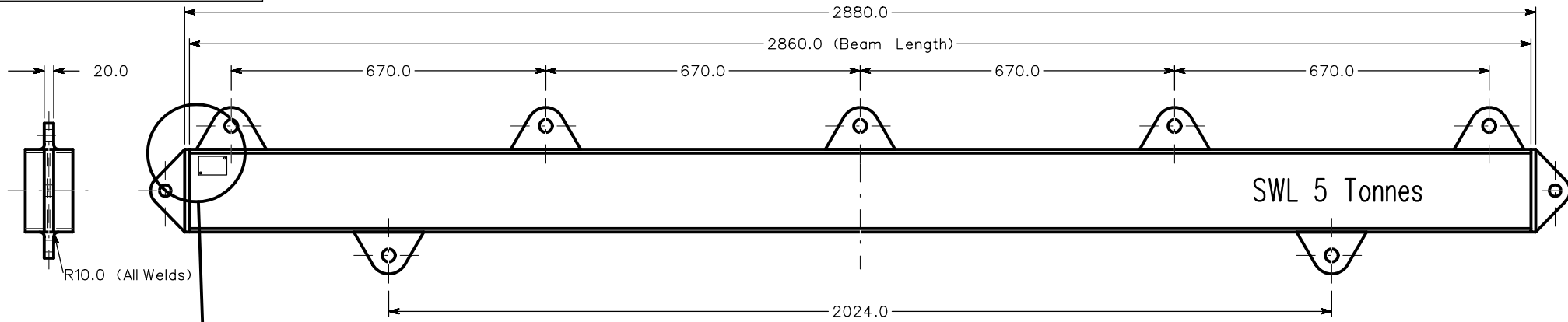
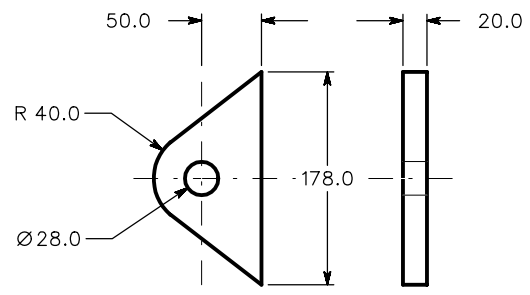


If In Doubt ASK !

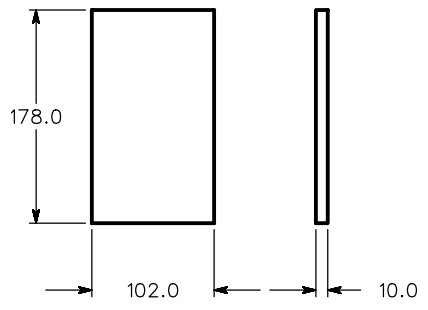


ID Plate Detail

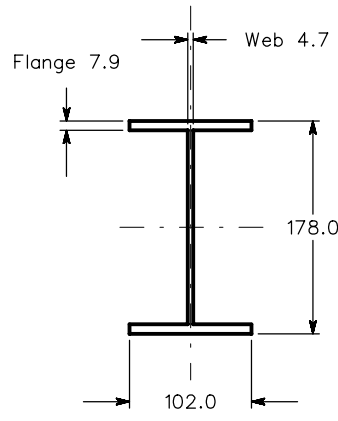
T5 Lifting Beam (5000 Kg)



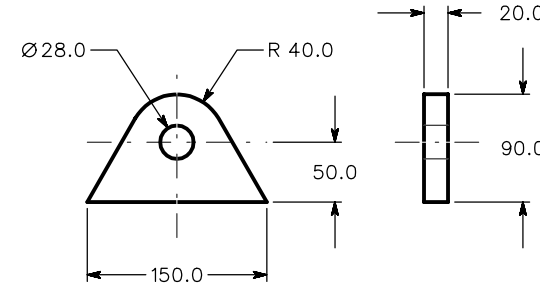
End Detail



End Plate Detail



Beam Detail



Lug Detail  
(For Top And Bottom Lugs)

Construction Notes	
Material:- 178*102MM x 19KgM Universal Beam To BS EN10025:1993-5275 Grade FE430A Lugs And End Plate : Grade FE50B	
Tolerance:- ± 1 mm	
Surface Finish:- Galvanised	
All Edges To Be Deburred	
All Lugs And End Plates Welded All Round	
ID Plate Rivetted To Beam	
ID Plate Material:- Stainless Steel	
ID Text Dims: - Height 4mm, Width 3mm	
SWL Text Stenciled And Spray Painted	
SWL Text Dims: - Height 47mm, Width 32mm	

Tolerance					File Name	
See Note					BEAM5T.DGN	
© SCHOLLE EUROPE LIMITED t/a Crestbury and J.W. Automarine 1972-2002 .This article and drawing is protected by copyright and is the property of Scholle Europe Limited.it may not be copied, published, or used for any purpose other than that for which it has been supplied, except with the written permission of Scholle Europe Limited.					Material See Note	
SCHOLLE EUROPE LTD. t/a <b>automarine</b>					SCHOLLE EUROPE LTD. Enterprise Way Fakenham, Norfolk, NR21 8SN, England Telephone: Fakenham 01328 852300 Fax: Fakenham 01328 864222 Email: sales@jwautomarine.co.uk	
Drawn AJD Sig AJD Scale 1:5 On A1 Checked					Revisions 1 Issue 9.7.90 2 15.9.98 3 5.4.00 4 12.4.01 5 8.6.01	
Client JW Automarine					Drawing No cJW 90/16 Sheet No 1 Of 1 Issue No 5 Date 8.6.01	
Title 5 Tonne Beam (Pt No. D0606512500)						