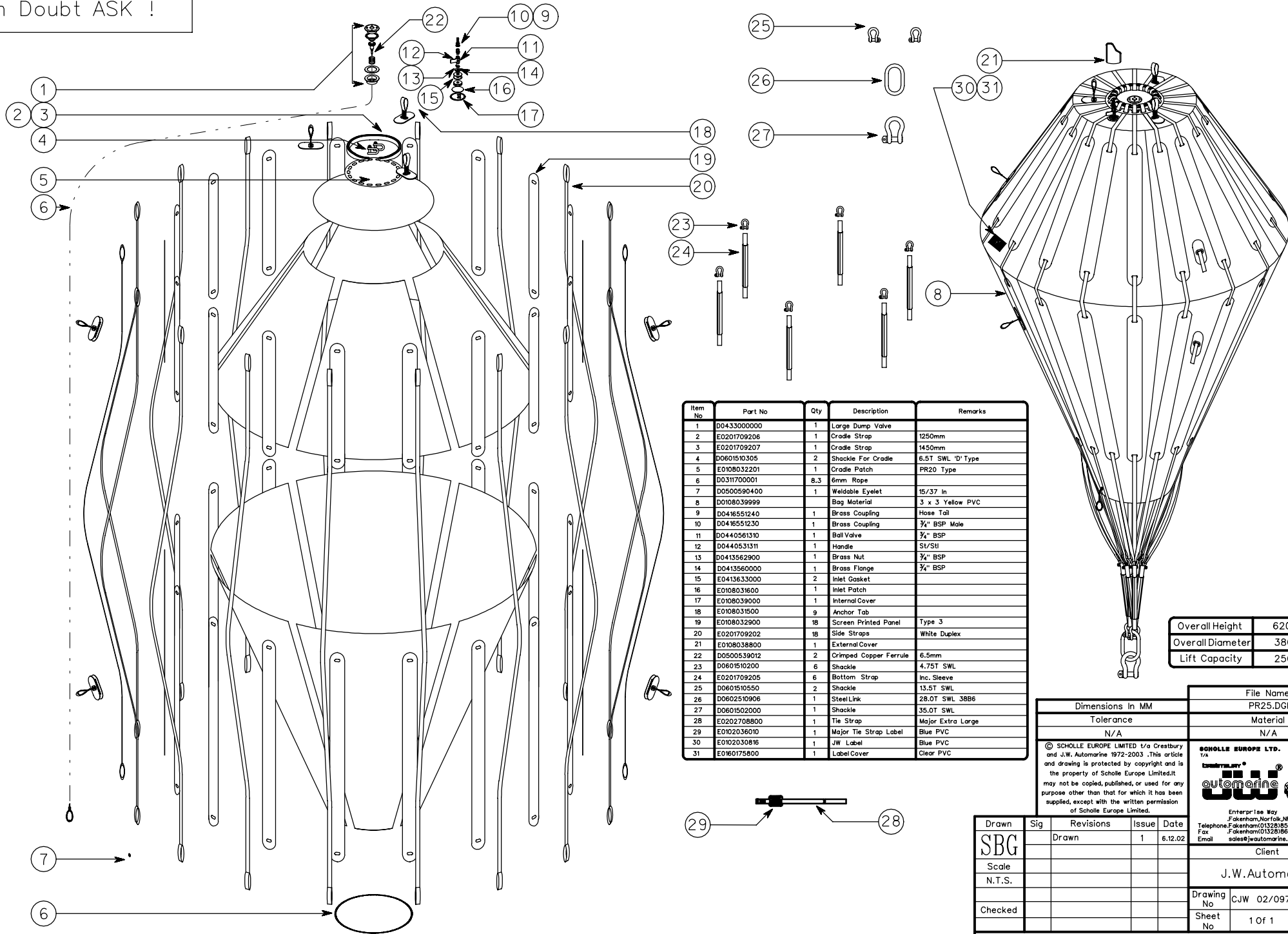


If In Doubt ASK !



Item No	Part No	Qty	Description	Remarks
1	D043300000	1	Large Dump Valve	
2	E0201709206	1	Cradle Strap	1250mm
3	E0201709207	1	Cradle Strap	1450mm
4	D060150305	2	Shackle For Cradle	6.5T SWL 'D' Type
5	E0108032201	1	Cradle Patch	PR20 Type
6	D0311700001	B.3	6mm Rope	
7	D0500590400	1	Weldable Eyelet	15/37 In
8	D0108039999	1	Bag Material	3 x 3 Yellow PVC
9	D0416551240	1	Brass Coupling	Hose Tail
10	D0416551230	1	Brass Coupling	3/4" BSP Male
11	D0440561310	1	Ball Valve	3/4" BSP
12	D0440531311	1	Handle	SV/STI
13	D0413562900	1	Brass Nut	3/4" BSP
14	D0413560000	1	Brass Flange	3/4" BSP
15	E0413633000	2	Inlet Gasket	
16	E0108031600	1	Inlet Patch	
17	E0108039000	1	Internal Cover	
18	E0108031500	9	Anchor Tab	
19	E0108032900	18	Screen Printed Panel	Type 3
20	E0201709202	18	Side Straps	White Duplex
21	E0108038800	1	External Cover	
22	D0500539012	2	Crimped Copper Ferrule	6.5mm
23	D0601510200	6	Shackle	4.75T SWL
24	E0201709205	6	Bottom Strap	Inc. Sleeve
25	D0601510550	2	Shackle	13.5T SWL
26	D0602510906	1	Steel Link	28.0T SWL 38B6
27	D0601502000	1	Shackle	35.0T SWL
28	E0202708800	1	Tie Strap	Major Extra Large
29	E0102036010	1	Major Tie Strap Label	Blue PVC
30	E0102030816	1	JW Label	Blue PVC
31	E0160175800	1	Label Cover	Clear PVC

Overall Height	6200mm
Overall Diameter	3800mm
Lift Capacity	25000Kg

Dimensions In MM		File Name
Tolerance		PR25.DGN
N/A		Material
N/A		N/A

© SCHOLLE EUROPE LIMITED t/a Crestbury and J.W. Automarine 1972-2003. This article and drawing is protected by copyright and is the property of Scholle Europe Limited. It may not be copied, published, or used for any purpose other than that for which it has been supplied, except with the written permission of Scholle Europe Limited.



Drawn	Sig	Revisions	Issue	Date
SBG		Drawn	1	6.12.02
Scale				
N.T.S.				
Checked				
Drawing No	CJW 02/097	Issue No	1	
Sheet No	1 Of 1	Date	6.12.02	

Title
PR25 (25000 Kg)