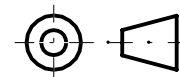
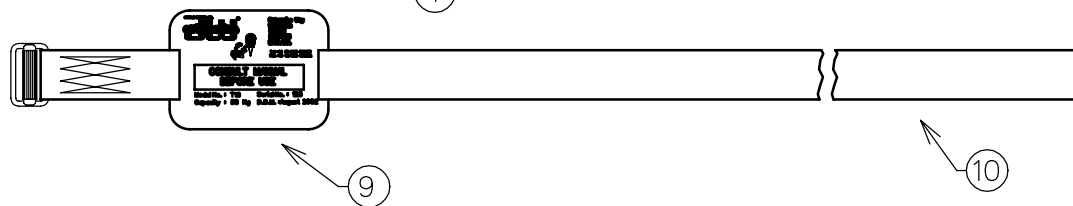
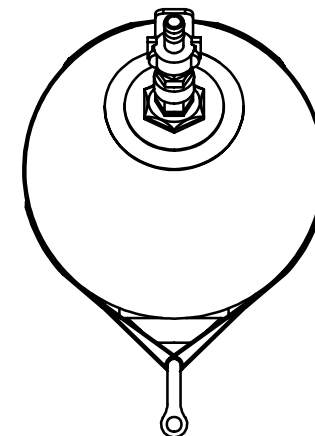
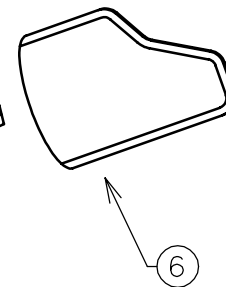
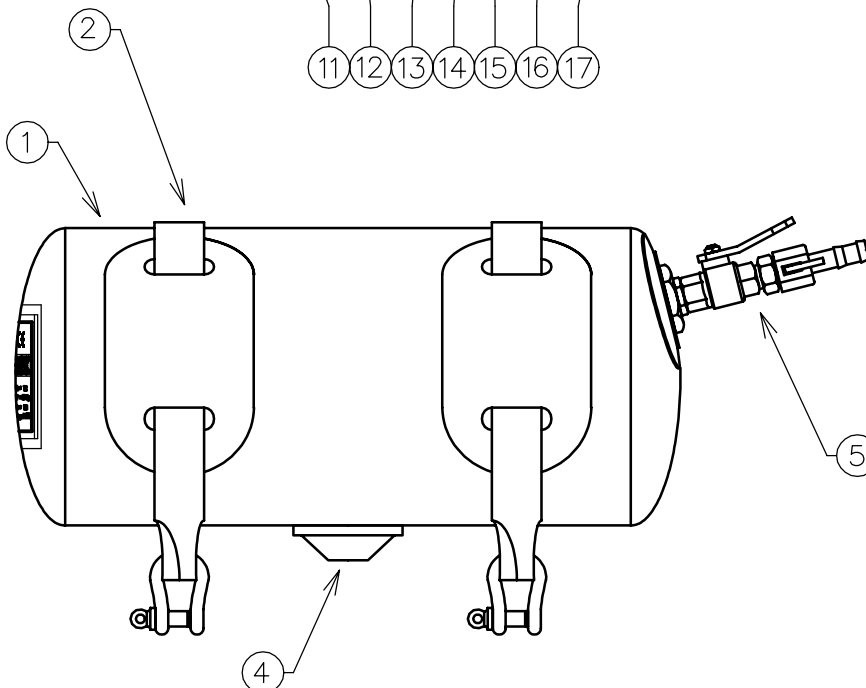
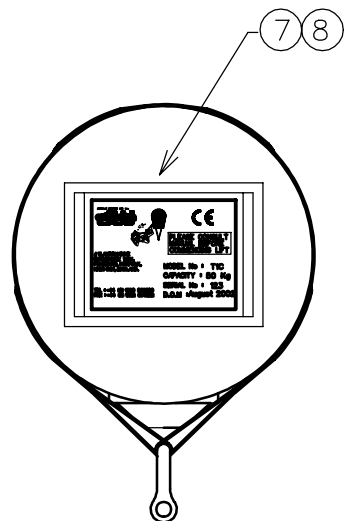
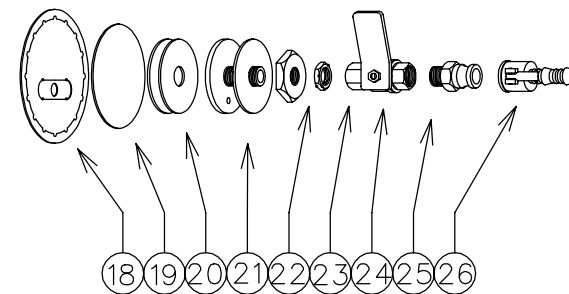
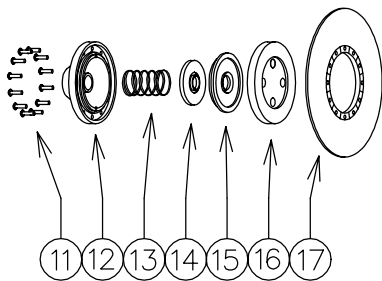


If In Doubt ASK !

Overall Length	650mm
Overall Diameter	300mm
Overall Height	420mm
Lift Capacity	50 Kg



Item No	Part No	Qty	Description	Remarks	Item No	Part No	Qty	Description	Remarks
1	D0104029999		2 x 2 PVC Material	Yellow	14	D0407683200	1	Pressure Plate	
2	E0202705012	2	Side Strap	T1C Type	15	D0407643500	1	Internal Diaphragm	
3	D0601510180	2	Shackle	2.0 Tonne SWL	16	D0407683300	1	Anchor Plate	
4	N/A	1	A3 Relief Valve	See Items 11 - 17	17	D0407598600	1	Weldable Flange	
5	N/A	1	3/4" Inlet Valve Assembly	See Items 18 - 26	18	E0108039000	1	Internal Valve Cover	
6	E0108038800	1	External Valve Cover		19	E0108031600	1	3/4" Inlet Patch	
7	E0102030816	1	JW Label	Blue PVC	20	E0413633000	2	3/4" Inlet Gasket	
8	E0160175800	1	Label Cover	Clear PVC	21	D0413560000	1	3/4" Brass Inlet	3/4" BSP Thread
9	E0202709600	1	Major Small Tie Strap		22	D0413562900	1	3/4" Brass Nut	3/4" BSP Thread
10	E0102036005	1	Tie Strap Label	Blue PVC	23	D0440451310	1	3/4" Ball Valve	3/4" BSP Thread
11	D0407563700	1	Screw Set		24	D0440531311	1	Stainless Steel Handle	
12	D0407683100	1	Black Housing		25	D0416551230	1	3/4" Brass Male Coupling	3/4" BSP Thread
13	D0407523900	1	2 PSI Spring		26	D0416551240	1	Brass Hose Tail	

Dimensions In MM		File Name	
Tolerance		T1C.DGN	
N/A		Material	
		2 x 2 Yellow PVC	
<small>© SCHOLLE EUROPE LIMITED 1/a Crestbury and J.W. Automarine 1972-2003 .This article and drawing is protected by copyright and is the property of Scholle Europe Limited.It may not be copied, published, or used for any purpose other than that for which it has been supplied, except with the written permission of Scholle Europe Limited.</small>			

Drawn	Sig	Revisions	Issue	Date	Client	
SBG			1	9.8.02	JW Automarine	
Scale	1:3				Drawing No	CJW 97/091
On A1					Issue No	1
Checked					Sheet No	1 Of 1
				Date	9.8.02	

Title
T1C (50Kg)